

# Software User Manual

## Welcome

Welcome to use Meter data manager software.

The software will effectively upload the testing data from Meter to PC .

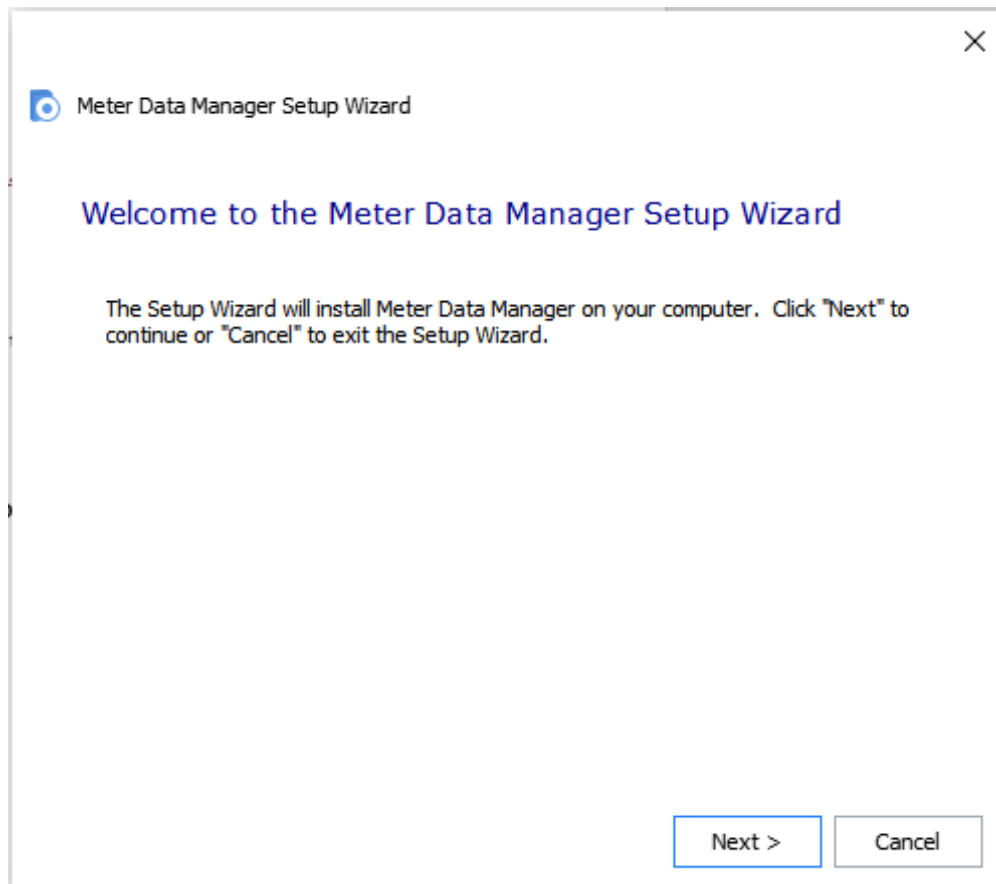
1. By using this software, users may save all the testing data as .xlsx form or .pdf file.
2. By using this software, users may generate the test report, review it and print it.

## System Requirement

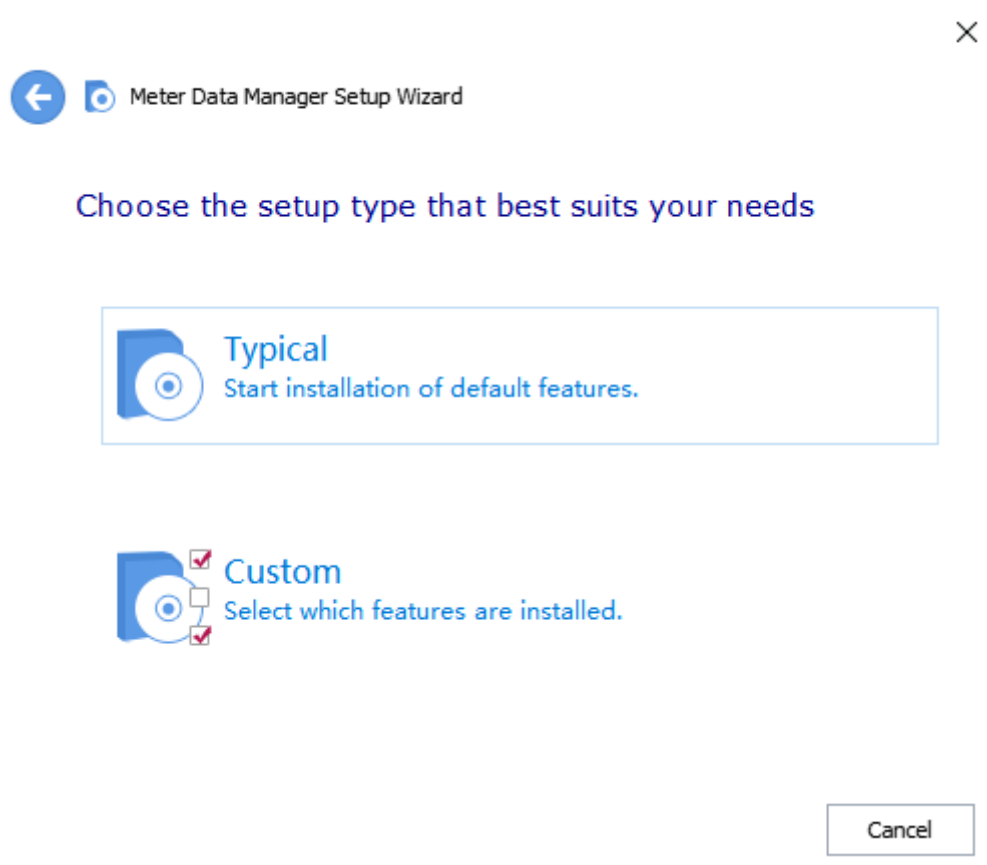
- System: Windows 7+
- Runtime Requirement:  
.NET Desktop Runtime 6 +  
[\*The following Windows versions are supported with .NET 6\*](#)
- Adobe Acrobat Reader DC  
<https://get.adobe.com/cn/reader/enterprise/>
- CPU: Pentium 600MHz +
- RAM:512MB +
- Graphics Card: Standard VGA256 color +
- Hard Disc: Typical Installation 300MB spare capacity +

## Software Installation

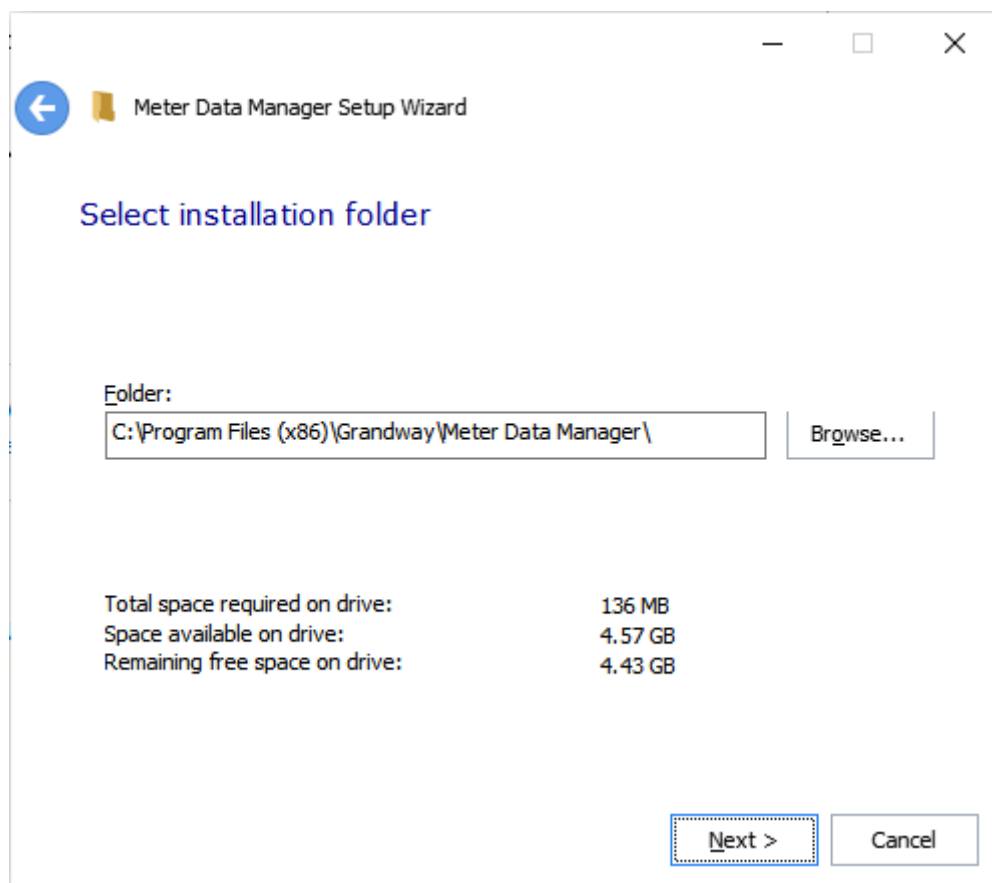
1. Please find the file "setup.exe", and double click it to activate the installation guide, then it displays as following on the screen.



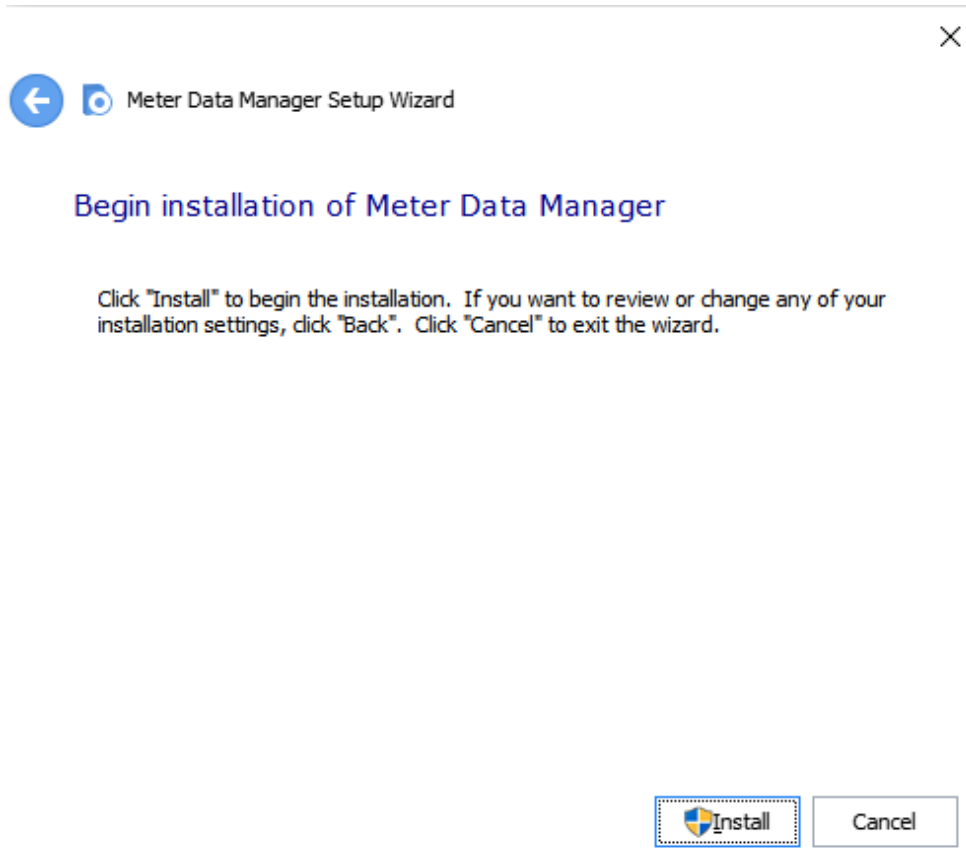
2. Select the setup type.



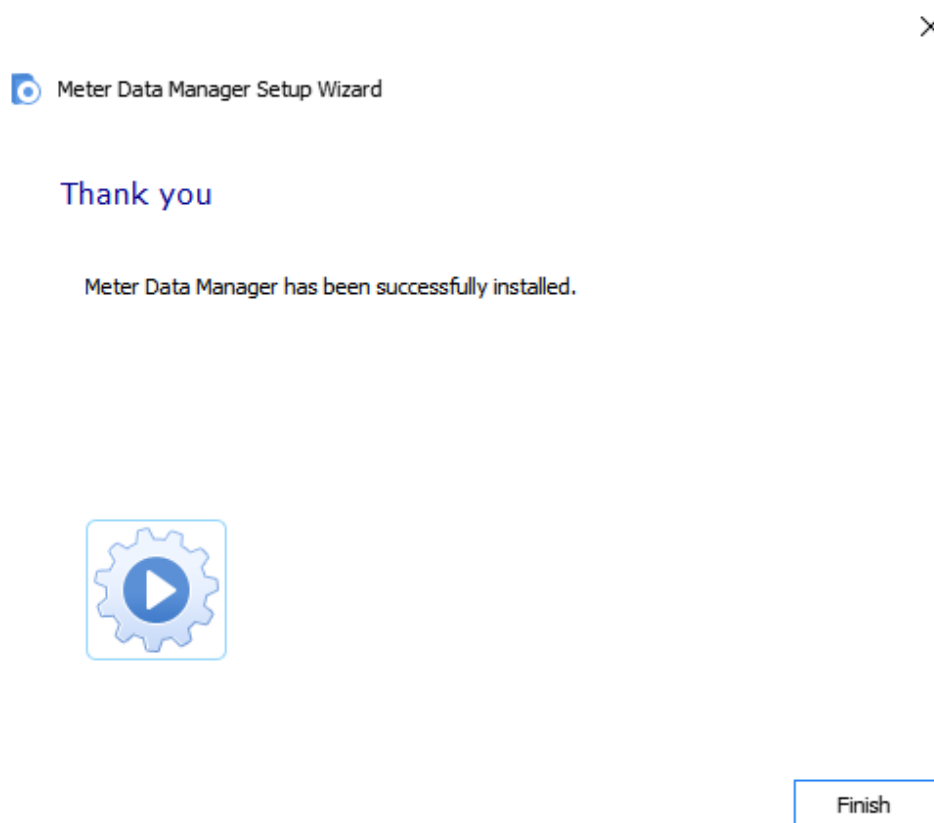
3. Click "Next" to select the installation folder.



4. Click "Install" to start the installation.

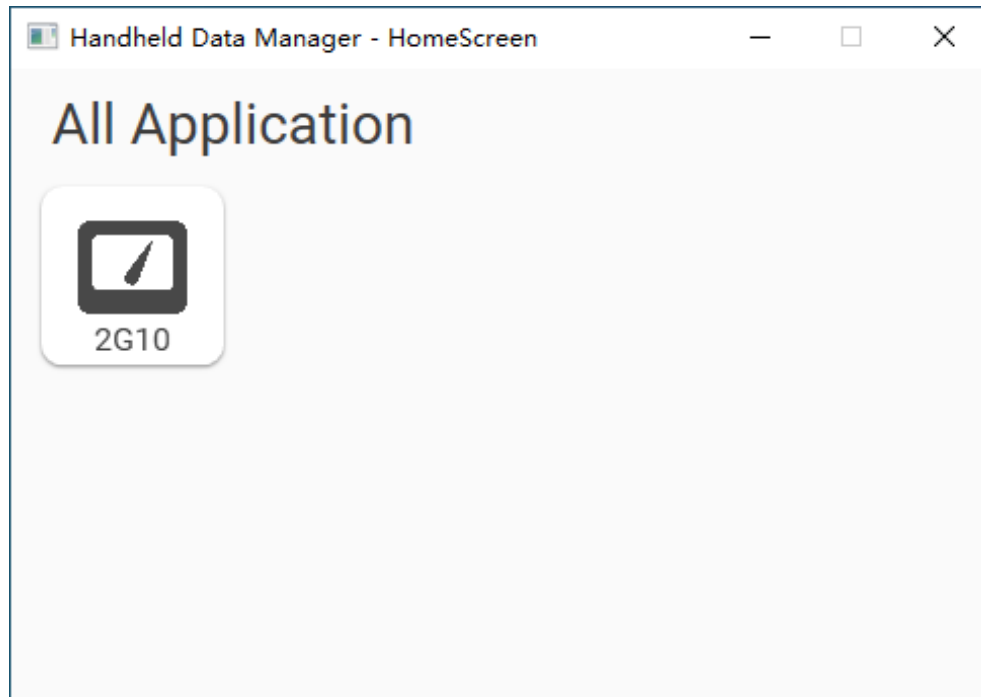


5. Install finish.

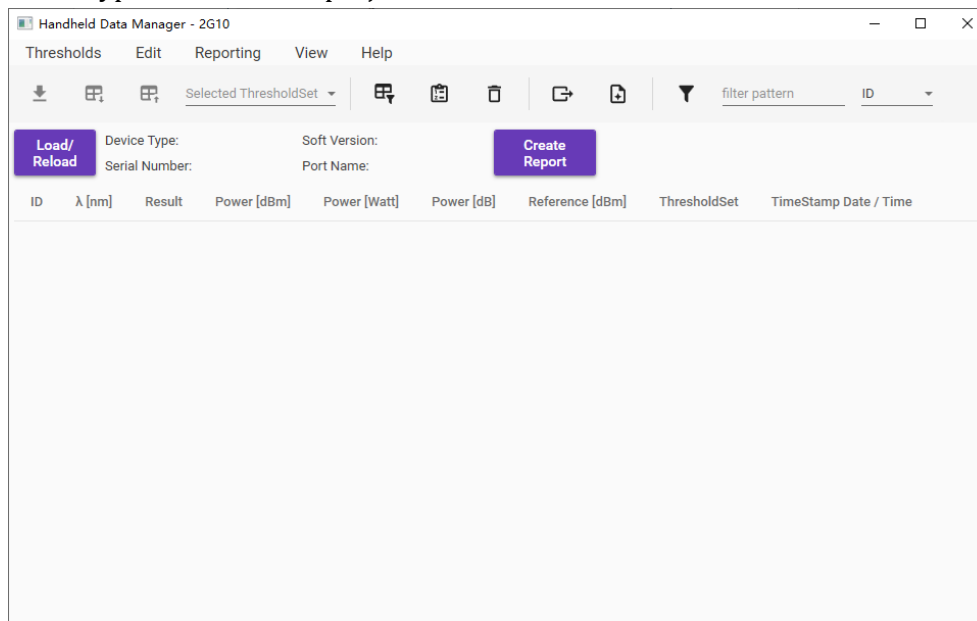


## Software Operation

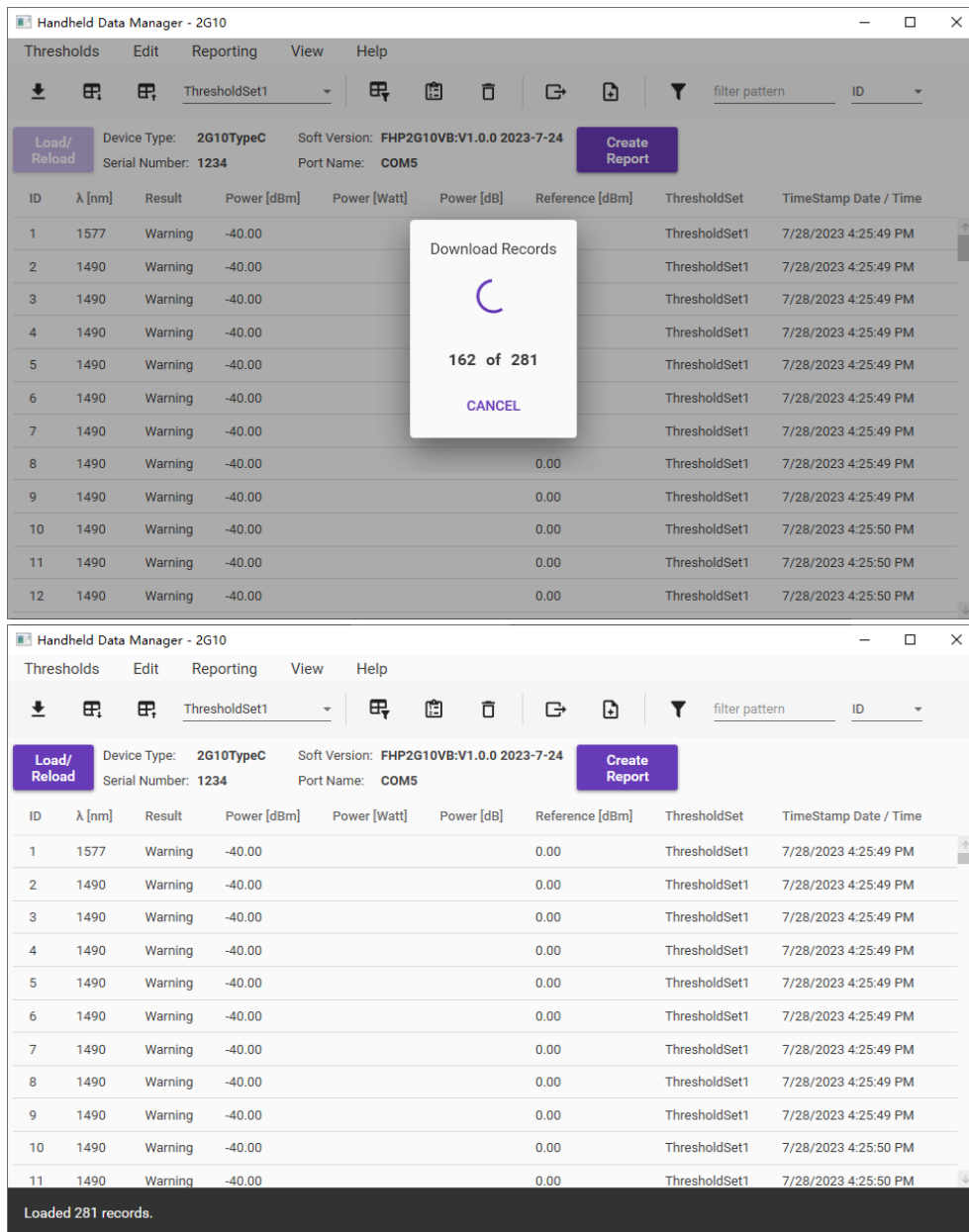
1. Double click the Handheld Data Manager.exe to open the program, here is the main window.



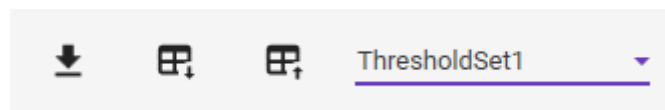
2. Select the device type and enter the project window.



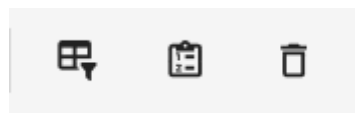
3. Open the optical power meter and link the optical power meter to the PC with USB cable.
4. Click “Load/Reload”: When the device is not connected, the software will try to connect the device and automatically export data from the device; When the device is connected, the software re-exports the data from the device.



5. This is the data module where you can export records, export threshold sets, import threshold sets, and set current threshold set for the report module.

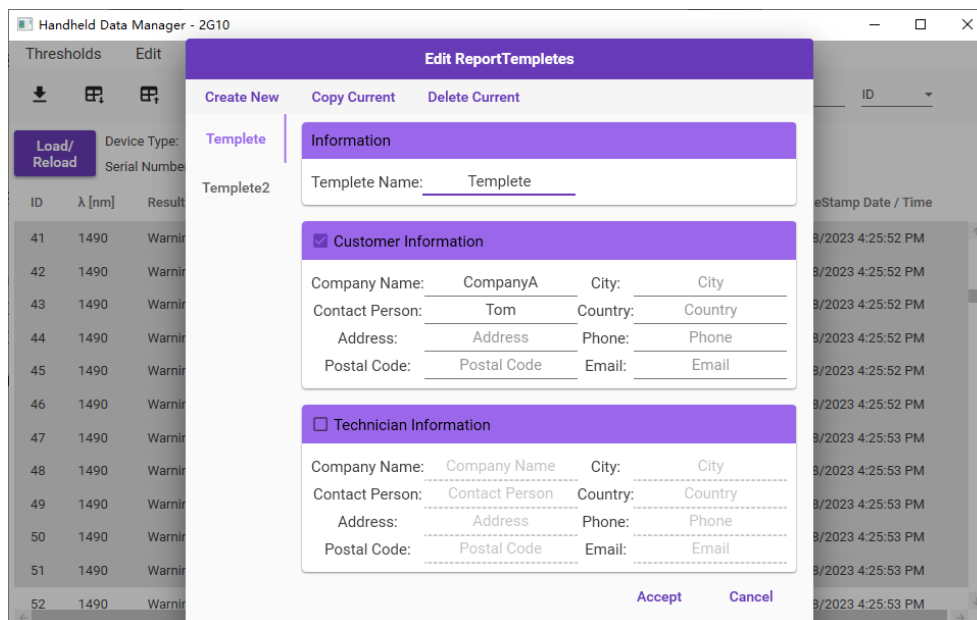


6. This is the records edit module where you can edit the columns, edit record's ID, remove records in the report.

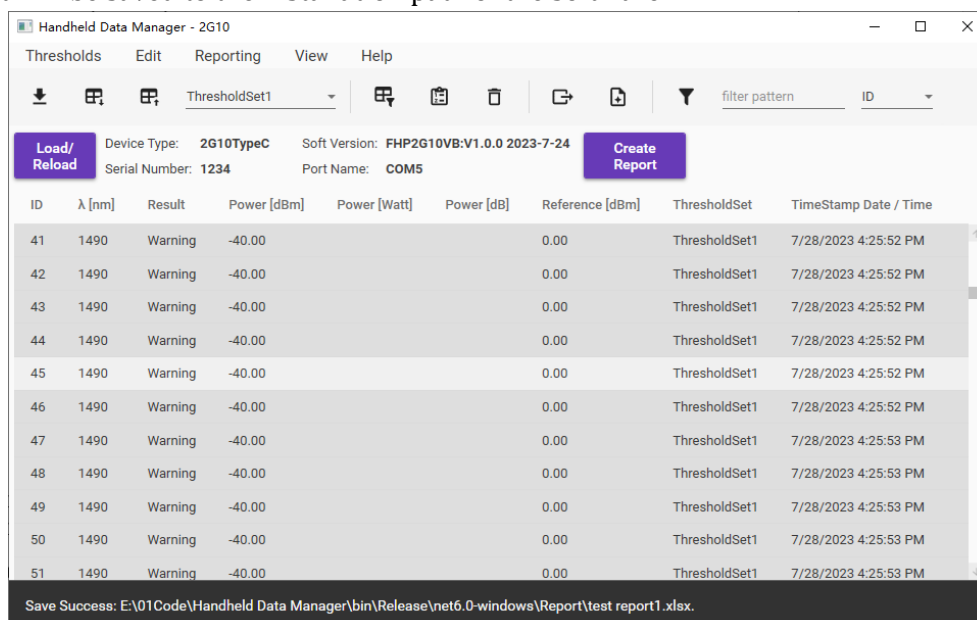


7. Among them, the edit ID function supports batch adding prefixes, suffixes, or serial numbers, and supports rolling back to the original ID. Click "i" or hover over these buttons to see for detailed help.





11. The report will be saved to the installation path of the software.



12. Click "Close" to exit the project window, you can reselect type and enter project window again or close the software.

Thanks!